

# modulo pi

Modulo Pi provides the next generation of media server solutions: Powerful, user-friendly, creative, and fully integrated. Conceived for your everyday shows as well as the most challenging productions.



modulo π



## User-Inspired Technology

Founded in 2010, Modulo Pi designs innovative media server solutions with users always in mind.

Our vision relies on our founder's extensive experience in the field: ever since he worked on the very first media server 15 years ago, he has maintained a close collaboration with show producers, creatives, and technicians all around the world.

Our special relationship with users remains a constant source of inspiration and innovation.

## Highly Versatile & Reliable

Our systems are based on strictly qualified GPUs and come in different customizable hardware configurations to adapt to your needs and budget. Gain optimal performance and reliability without oversizing your hardware. Available as an option, a new ruggedized suspended chassis offers reinforced framework and professional connectivity to endure rough conditions.

## More Integration, Less Complexity

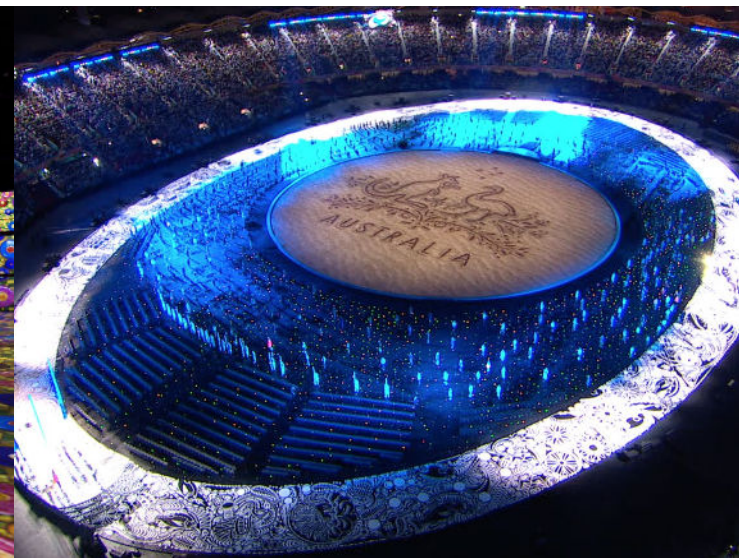
At Modulo Pi, we strongly believe that complexity is not a feature, and build our solutions accordingly.

We strive to provide the most comprehensive and user-friendly media server solutions, so you can enjoy unlimited power, and unleash your creativity through the complete workflow: Modulo Player and Modulo Kinetic are fully integrated systems designed to effortlessly create stunning visual experiences in any type of application.

## Ready For Any Application

Hundreds of projects have already been powered by our versatile and reliable systems worldwide.

Our all-in-one approach and advanced features perfectly answer the needs of a wide array of applications: corporate events or permanent installations, creative mappings, theme parks, museums, and touring.



LUX ANIMAE - Metz Cathedral  
Artistic Director: Yann Nguema  
Light Designers: Arnaud Doucet & Gaël Digne  
Musical Composition: Ez3kiel  
Production: La Maison Production © Studio pierre 2 lune

L'Atelier des Lumières: AMIEX® by Culturespaces  
Technical Production: AMIEX Studio & Cadmos  
Production: Gianfranco Iannuzzi, Renato Gatto, Massimiliano Siccardi  
Music: Luca Longobardi

Gold Coast 2018 Commonwealth Games  
Video Projection: The Electric Canvas  
Production: Jack Morton Worldwide  
Video Content: The Pulse

# Two Turnkey Solutions:

All Your Needs Covered



## MODULO PLAYER

More than a Media Player

Modulo Player, a cost-effective media server ideal for your everyday projects

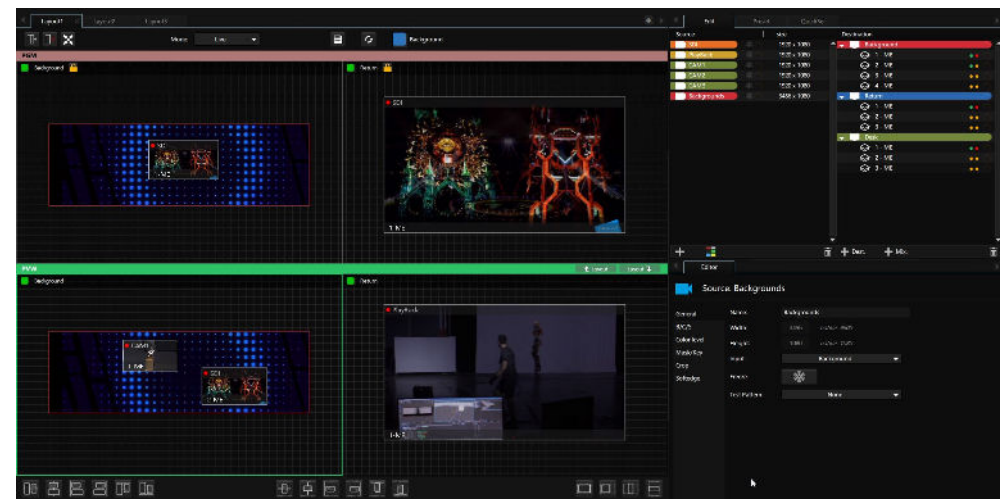
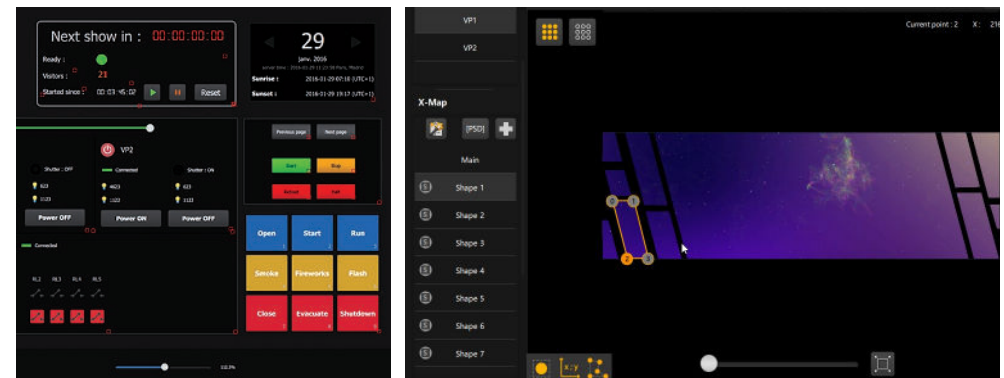
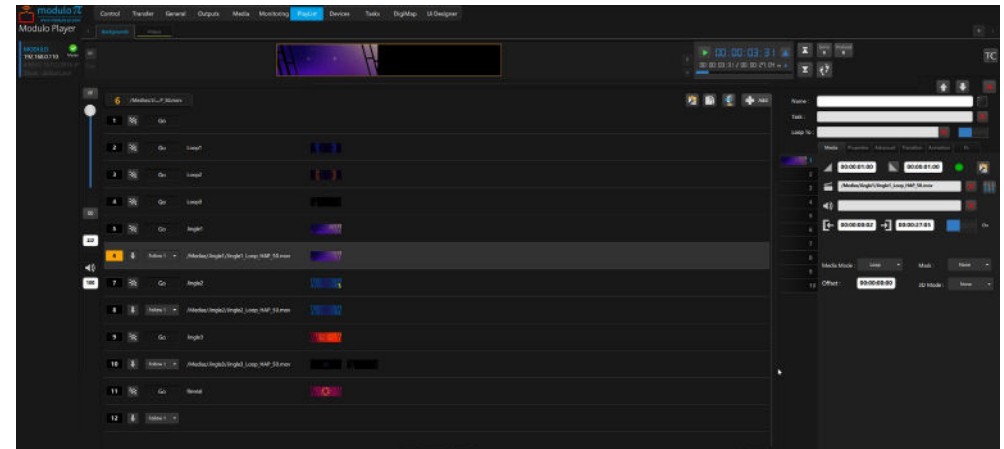
Easy to learn, set-up, and operate, Modulo Player combines the extensive capabilities of a media server, and a live mixer. Seamlessly process media, encode, and playback your show through its super intuitive user interface. Simple-to-use workflow and playlists enable fast show set-up, and last-minute changes.

- Flexible playlist management
- Embedded low-latency live mixer | **NEW!**
- Advanced 2D warping through our exclusive X-Map function
- Easy, yet powerful show control
- User Interface designer to easily create your own UI
- True multi-user mode for optimized set-up and operation

### 4 customizable hardware configurations:

- Nano: small form factor
- Standard, Pro & Ultra: with superior customizable hardware configurations.

Available with a regular or ruggedized suspended chassis





# MODULO KINETIC

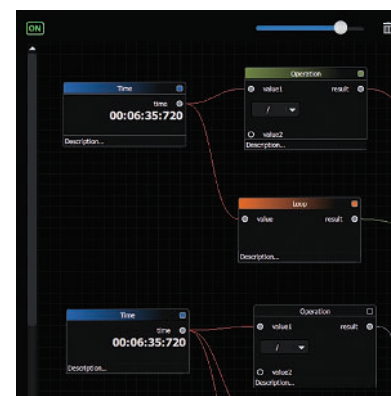
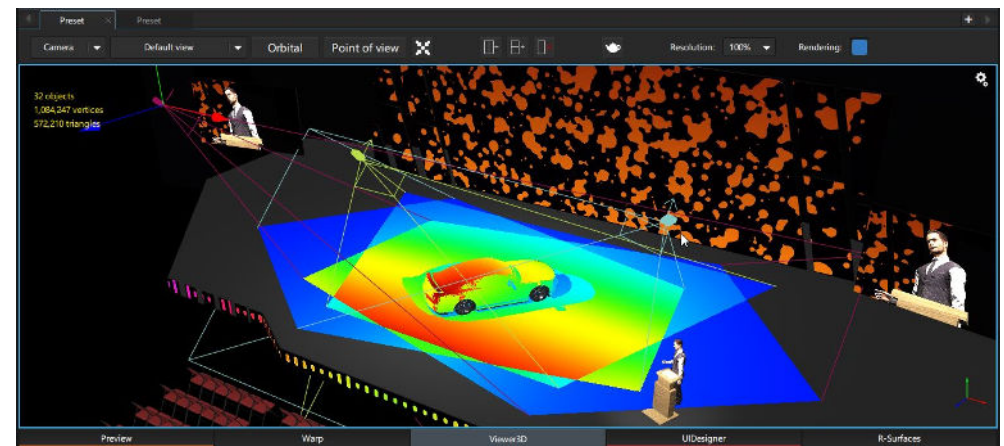
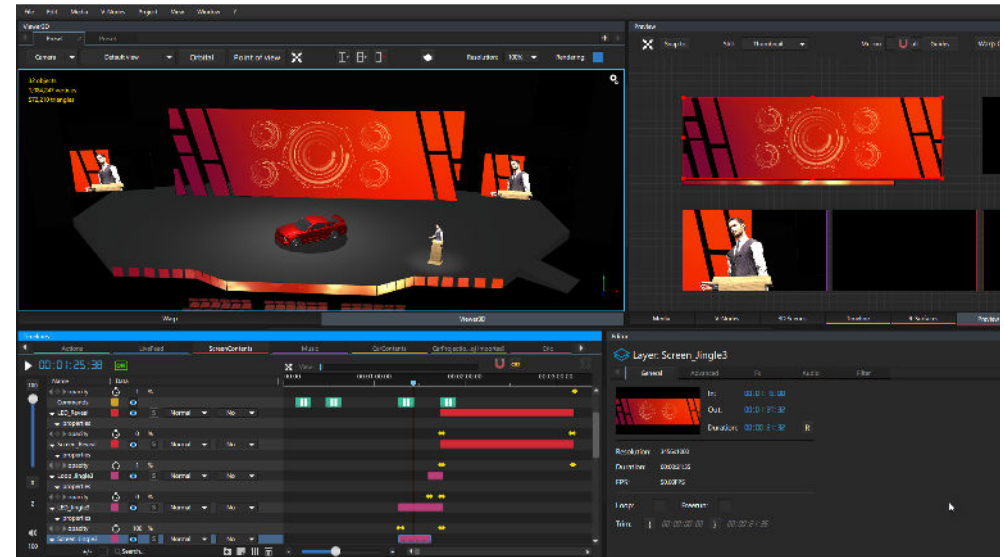
More than a Media Server

Modulo Kinetic, the ultimate video solution tailored for your most challenging projects

A super high-end and fully integrated media server which will be the cornerstone of your complete workflow: Perform study, simulation, show creation, encoding, playback and control... all of it through one single box. With its intuitive user interface and advanced innovative features, Modulo Kinetic offers unprecedented real-time 3D, interactivity, and tracking.

- Non-linear, real-time timelines editing with keyframes
- Embedded low-latency live mixer **| NEW |**
- Advanced 2D warping through our exclusive X-Map function
- Advanced 3D engine with generative content, incl. particles
- Projection study and simulation in 3D & VR
- 3D projector calibration
- Powerful optical tracking module **| NEW |**
- Flexible nodal programming
- Easy, yet powerful show control
- User Interface designer to easily create your own UI
- True multi-user mode for optimized set-up and operation

*Available with a regular or ruggedized suspended chassis*



modulo-pi.com

