

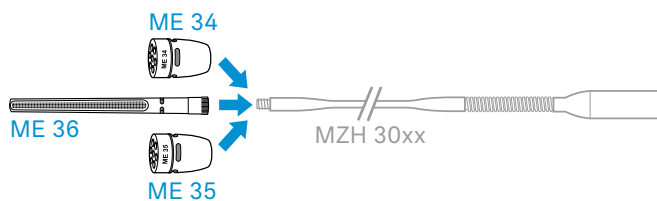


## ME 34 | ME 35 | ME 36

### Microphone heads for MZH goosenecks



The ME 34, ME 35 and ME 36 are pre-polarized condenser microphone heads for use with the Sennheiser MZH goosenecks. The microphone heads are designed for conference, public address and studio applications.



#### FEATURES

##### ME 34 | ME 35

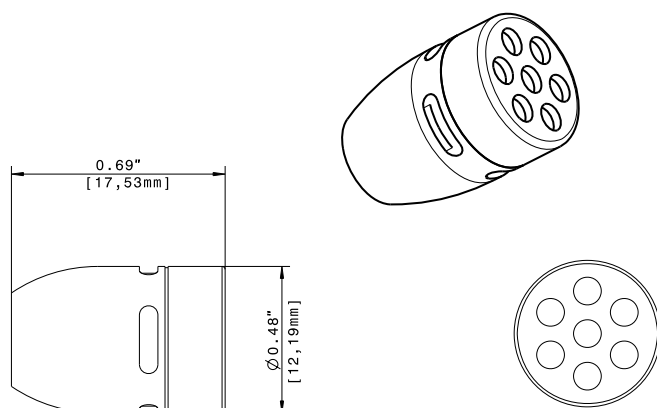
- ME 34: cardioid pick-up pattern
- ME 35: super-cardioid pick-up pattern
- Rugged metal housing with non-reflective coating
- High sound quality
- Low equivalent noise level

##### ME 36

- Super-cardioid/lobar pick-up pattern
- Rugged metall housing with non-reflective coating
- Excellent directivity
- Superior sound quality
- Very low equivalent noise level

#### DIMENSIONS

##### ME 34 | ME 35



#### PRODUCT VARIANTS

<b>ME 34</b>	black	Art. no. 005060
<b>ME 34 W</b>	white	Art. no. 005061
<b>ME 35</b>	black	Art. no. 005062
<b>ME 35 W</b>	white	Art. no. 005063
<b>ME 36</b>	black	Art. no. 005064
<b>ME 36 W</b>	white	Art. no. 005065

#### ACCESSORIES

<b>MZH 3015</b>	Art. no. 005074
<b>MZH 3040</b>	Art. no. 005076
<b>MZH 3042</b>	Art. no. 009384
<b>MZH 3062</b>	Art. no. 500652
<b>MZH 3072</b>	Art. no. 500653
<b>MZH 3015-L</b>	Art. no. 009435
<b>MZH 3040-L</b>	Art. no. 009436
<b>MZH 3042-L</b>	Art. no. 009437
<b>MZH 3062-L</b>	Art. no. 504609
<b>MZH 3072-L</b>	Art. no. 504610

##### ME 36





# ME 34 | ME 35 | ME 36

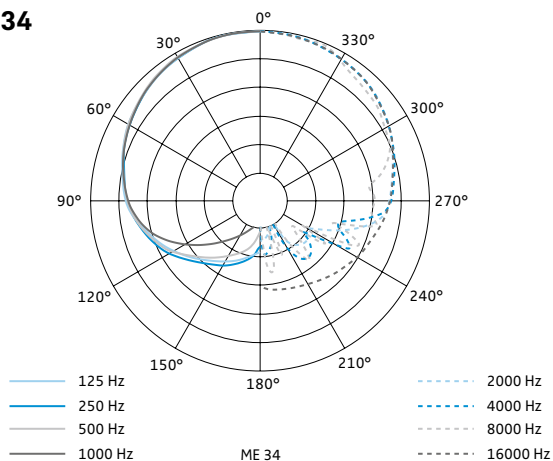
## Microphone heads for MZH goosenecks

### SPECIFICATIONS

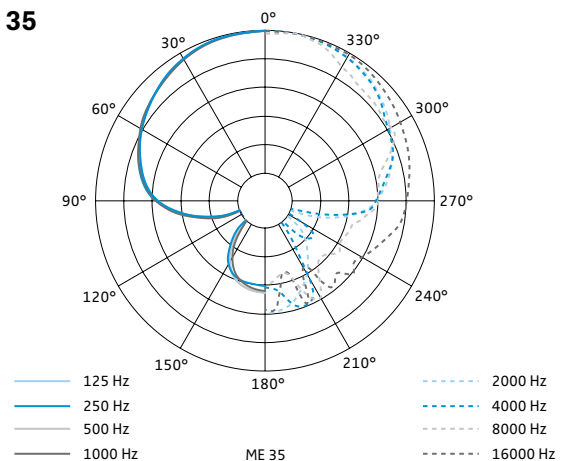
	ME 34	ME 35	ME 36
Frequency response	40 – 20000 Hz	50 – 20000 Hz	40 – 20000 Hz
Acoustic operating principle	pressure gradient transducer	pressure gradient transducer	pressure gradient transducer/ interference tube transducer
Pick-up pattern	cardioid	super-cardioid	super-cardioid/lobar
Sensitivity	10 mV/Pa	10 mV/Pa	18 mV/Pa
Electrical impedance	50 Ω	50 Ω	50 Ω
Min. terminating impedance	1 kΩ	1 kΩ	1 kΩ
Equivalent noise level	37 dB (CCIR) 26 dB(A)	37 dB (CCIR) 26 dB(A)	34 dB (CCIR) 23 dB(A)
Power supply via MZH	P12 – P48	P12 – P48	P12 – P48
Current consumption microphone	250 μA	250 μA	250 μA
Dimensions	∅ 12 x 18 mm	∅ 12 x 18 mm	∅ 8.2 x 96 mm
Weight (without MZH)	9.5 g	9.5 g	17 g
Connector	special coax connector	special coax connector	special coax connector

### POLAR PATTERN

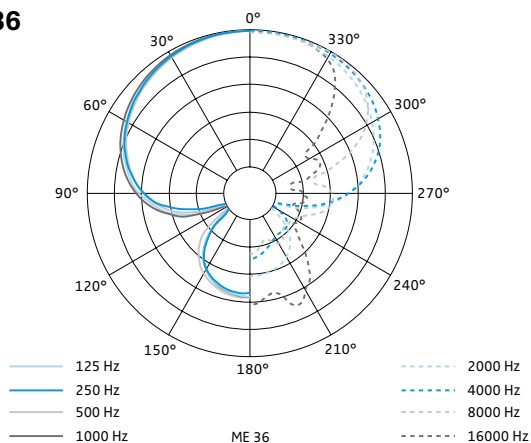
#### ME 34



#### ME 35



#### ME 36



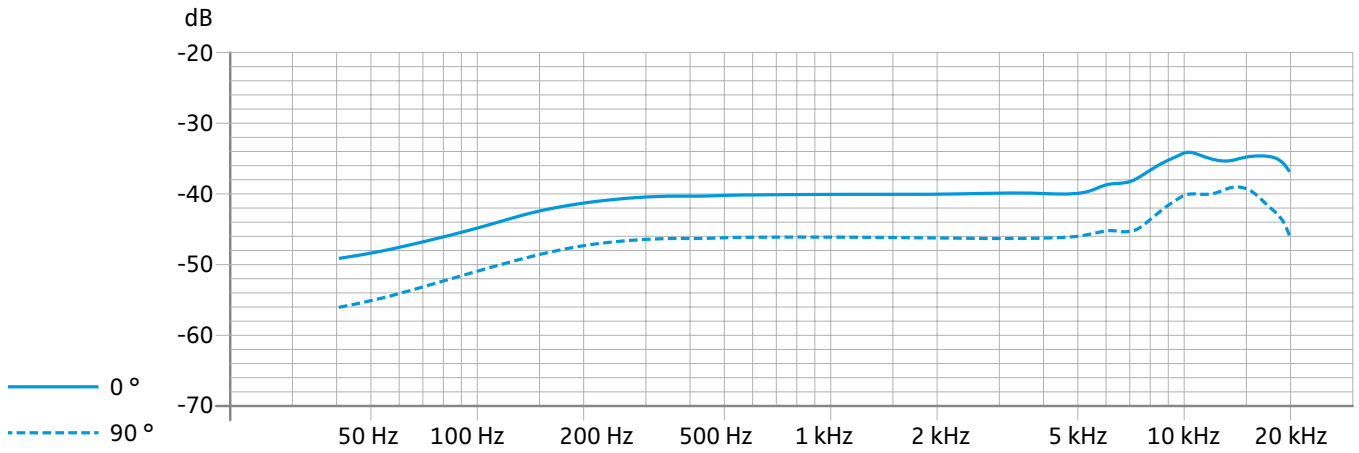


# ME 34 | ME 35 | ME 36

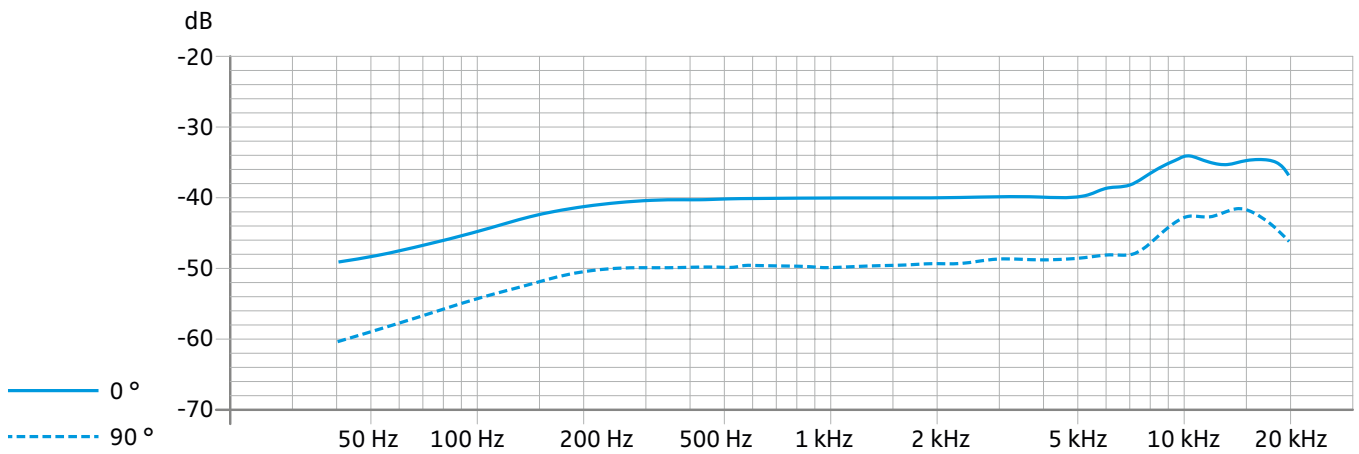
## Microphone heads for MZH goosenecks

### FREQUENCY RESPONSE

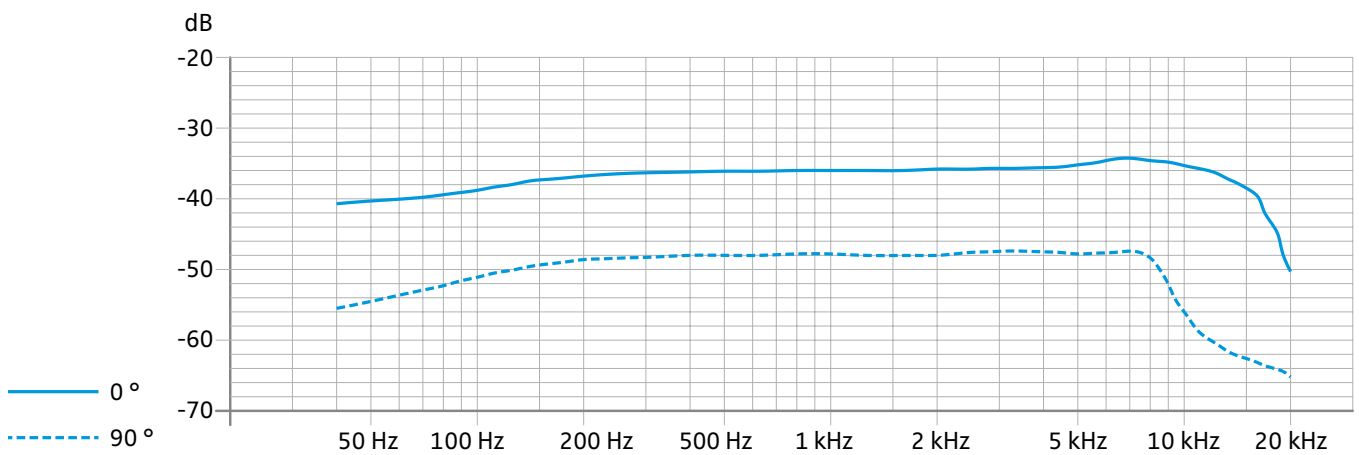
#### ME 34



#### ME 35



#### ME 36





## ME 34 | ME 35 | ME 36

### Microphone heads for MZH goosenecks

#### ARCHITECT'S SPECIFICATION

##### ME 34

A gooseneck microphone for speech transmission shall be modular and streamlined in appearance. The microphone provides a cardioid characteristic and shall be powered with 12 to 48V phantom powering. The microphone shall cover a frequency range of 40Hz to 20kHz, the equivalent noise level must not exceed 26 dB weighted A. For connection with Sennheiser MZH goosenecks a high quality screw thread shall be provided. The electrical contact points shall be gold plated. The housing of the microphone shall be made from metal, finished with a non reflective black coating. Various mounting options and goosenecks shall be available.

The microphone shall be Sennheiser ME34.

##### ME 35

A gooseneck microphone for speech transmission shall be modular and streamlined in appearance. The microphone provides a supercardioid characteristic and shall be powered with 12 to 48V phantom powering. The microphone shall cover a frequency range of 50Hz to 20kHz, the equivalent noise level must not exceed 26 dB weighted A. For connection with Sennheiser MZH goosenecks a high quality screw thread shall be provided. The electrical contact points shall be gold plated. The housing of the microphone shall be made from metal, finished with a non reflective black coating. Various mounting options and goosenecks shall be available.

The microphone shall be Sennheiser ME 35.

##### ME 36

A mini shotgun microphone for speech transmission shall be unobtrusive in appearance. The microphone provides a hypercardioid/lobar directivity and shall be powered with 12 to 48V phantom powering. The microphone shall cover a frequency range of 40Hz to 20kHz, the equivalent noise level must not exceed 23 dB weighted A. For connection with Sennheiser MZH goosenecks a high quality screw thread shall be provided. The electrical contact points shall be gold plated. The housing of the microphone shall be made from metal, finished with a non reflective black coating. Various mounting options and goosenecks shall be available.

The microphone shall be Sennheiser ME 36.